

New branch in Cromwell

A new jointly branded Fruitfed Supplies-PGG Wrightson store opened in Cromwell at the end of March to service both horticultural and farming clients.

The new Cromwell store heralds the end of an era for branch manager Shelley McKinnel and her team who worked in less-than-ideal circumstances since the merger of Pyne Gould Guinness and Wrightson/Fruitfed Supplies.

PGG Wrightson director Baird McConnon spoke at the opening function, welcoming clients and suppliers to the new Pinot Noir Drive premises.

"You would have to have your eyes shut not to recognise the explosion of grape production around the Cromwell area over the last ten years. I understand in the coming year the region is looking down the barrel of 1600 ha of planted grapes. Quite mind boggling; you don't have to think too far back to remember the barren rabbit country that used to be the norm," said McConnon.

"Today New Zealand agriculture and horticulture is all about change; some good and some not so good. This year parts of the country are gripped by ongoing drought conditions; the meat industry is in disarray. But PGG Wrightson staff and shareholders understand the need to move with the times. We clearly understand that for PGG Wrightson to grow and prosper, we need our clients to do the same.

"For me as a shareholder investing in this business, it was never about just doing a few mergers and capitalising on some overhead savings but more part of a journey to shape the company to offer sustainable value to the farming community and deliver relevant value in today's farming world.

"And for all the work that goes on in the corridors of head office, for many of our clients, it's people like Shelley, Ann, Mark and Emma [the Cromwell branch staff] who are the faces of PGG Wrightson and Fruitfed Supplies. And it's stores such as this that are scattered around the country that are a key interface with our farming and horticultural communities. If they can't supply the answer you're looking for, they know where to go inside the company to find it. They are here to help."

The Cromwell store offers substantial warehousing facilities, storage yards and a brighter, cleaner retail environment. Services to both the horticulture industry and the agriculture sector mean the product offering is wide – from winery chemicals to stock food, crop and animal protection products to safety equipment and clothing. ⇨



Staff at Fruitfed Supplies Cromwell
(L-R): Ann Trevathan, Shelley McKinnel, Emma Rowe-Pledger and Mark Hamlin



Outside the new Cromwell store



Clients, suppliers and staff mingle during the opening function in late March

In this issue we look at:

- ✓ Latest onion varieties from Seminis and Terranova
- ✓ Recently released fungicide Nautile
- ✓ Another successful Orchard-Rite visit

Address: 8 Pinot Noir Drive,
Cromwell

Phone: 03 445-3730

Fax: 03 445 0839

Manager: Shelley McKinnel
smckinnel@pggwrightson.co.nz

New and proven onion varieties for the season ahead

Fruitfed Supplies offers a full range of vegetable seeds, including onion, from major seed suppliers such as Seminis New Zealand and Terranova Seeds.

The Pukekohe branch of Fruitfed Supplies has featured a unique display over recent weeks with a range of mature onions set out in baskets by variety, each accompanied by an information card, allowing growers to assess the varieties best suited to their block.


The support of companies like Terranova and Seminis locally and regionally is an invaluable resource for Fruitfed Supplies and our clients, says Damian Elliott, Pukekohe branch manager. Seed coating and pelleting services offered by Wrightson Seeds and Seed Enhancements compliment the range of products and services available for vegetable crop growers through Fruitfed Supplies.

Following is a summary of the key onion varieties being offered by Terranova Seeds and Seminis New Zealand. [Our thanks to Alan McKee of Terranova and Grant Ryan of Seminis for their assistance setting up the display and providing this detailed crop information.]

Terranova Seeds

Terranova Seeds works with the Enza Zaden onion breeding programme for exclusive distribution of their hybrid varieties throughout New Zealand. Enza has an extensive breeding team in both Pukekohe and Australia breeding new hybrid crosses specifically adapted to our market. Martyn Callaghan, the Enza onion breeder based in Pukekohe, has been selecting and crossing onions for New Zealand conditions for many years and has a very experienced understanding of the various production areas here. Terranova also continues to select and maintain a well proven range of open pollinated varieties. Terranova has an experienced sales team located throughout the country willing to assist with specific recommendations for your area.

Listed by date of maturity	TERRANOVA BROWN VARIETIES	Pukekohe	Hawke's Bay	Manawatu	South Island	
Omega F1	Early, proven high yielding for fresh market or export	Sow May; mature late Nov /early Dec	Sow May; mature early Dec	Sow May; mature early Dec	Sow Mar; mature Dec	 Omega F1
Lightning F1	Early maturing, machine harvestable hybrid. Sown throughout the season	TRIAL Sow May; mature early Dec	TRIAL Sow May; mature early Dec	TRIAL Sow May; mature early Dec	X	 Lightning F1
Sirius F1	Trials show improved bulb shape/quality, higher yield and higher pack-out	Sow Jun-Aug; mature mid-Dec	Sow Jun-Aug; mature late Dec	Sow June-Aug; mature late Dec	Sow March or July; mature Dec	
Kiwi Gold	A market standard, well-proven, reliable export, ongoing maintenance to improve performance/shape/skin quality	Sow Jun-July; mature early Jan	Sow Jul; mature Jan	Sow Jul; mature Jan	Sow Jul-Aug; mature Jan	 Kiwi Gold
TON6705	Vigorous ELK selection, excellent shape and size uniformity	Sow Jun-Jul; mature mid-Jan	TRIAL Sow Jul; mature Jan	TRIAL Sow Jul; mature Jan	TRIAL Sow Jul-Aug; mature Jan	 TON6705
Baron	High yielding ELK type, superior skin quality, stronger root system	Sow Jul to early Aug; mature Jan	Sow Jul; mature Jan	Sow Jul; mature Jan	Sow Jul-Aug; mature Jan	
Chester	Very uniform globe shaped onion, particularly suitable for Manawatu	Sow Jun to early Jul; mature Jan	Sow Jul-Aug; mature Jan	Sow Jul-Aug; mature Jan	Sow Jul-Aug; mature Jan	
Terranova ELK	Selected by Terranova for improved performance over many years	Sow late May-Jun; mature early Jan	Sow Jun; mature Jan	Sow Jun; mature Jan	Sow Jul-Aug; mature Jan	
Crusader	Later maturing, with excellent vigour and skin quality	Sow Jul-Aug; mature late Jan	Sow mid-Jul to Aug; mature Feb	Sow mid Jul-Aug; mature Feb	Sow Aug; mature Feb	 Crusader
R5957	New hybrid PLK, long storage with good shape and uniformity	TRIAL Sow Jul-Aug; mature early Feb	TRIAL Sow Aug-Sept; mature Feb	TRIAL Sow Aug-Sept; mature Feb	TRIAL Sow Aug-Sept; mature Feb	
Terranova PLK	Ongoing breeding programme to improve performance	Sow Jul-Aug; mature early Feb	Sow Jul-Aug; mature early Feb	Sow Jul-Aug; mature early Feb	Sow Aug-Sept; mature Feb	
T400 F1	Late maturing brown, high quality, very uniform bulbs, large size grades for Japanese market	Sow Sept; mature late Feb	Sow Sept; mature late Feb	Sow Sept; mature late Feb	X	

Listed by date of maturity	TERRANOVA RED VARIETIES	Pukekohe	Hawke's Bay	Manawatu	South Island	
Meteor F1	Bright red, vigorous variety for fresh market.	Sow Jun; mature late Dec	Sow Aug; mature Jan	Sow Aug; mature Jan	Sow Aug; mature Jan	
Red Emperor F1	Recently introduced variety, good shape, high yield potential, very good colour. Developing a reputation for performance	Sow Jul-Aug; mature mid-Jan	Sow Aug-Sept; mature end Feb	Sow Aug-Sept; mature end Feb	Sow Aug-Sept; mature Feb	

Red Emperor

Seminis New Zealand

Based in Pukekohe, Seminis New Zealand has a research station where the main activity is onion breeding, with one full-time breeder and two research assistants working on the New Zealand intermediate onion export storage segment.



The company's germplasm collection is extensive, includes the original PLK (Pukekohe Long Keeper) and ELK (Early Long Keeper) varieties maintained and selected by, firstly, May and Ryan for more than 40 years and, most, recently by Seminis. A large breeding programme for red varieties includes germplasm with early and late maturity, and dark red internal and external colour. Selection for key traits, including disease resistance for pink root and *fusarium*, continues for use in a backcrossing programme with PLK types for the local onion industry. A fully dedicated plant pathology team supports the onion breeding programme to check disease resistance and provide feedback on new varieties.

Listed by date of maturity	SEMINIS BROWN VARIETIES * new this season	Pukekohe	Hawke's Bay	Manawatu	South Island	
39002 *	High yield, some PRR (pink root res), excellent skin quality	Sow late May; mature mid-Dec	Sow early to mid-May; mature early to mid-Dec	Sow Mar; mature mid-Dec	Sow Mar; mature mid-Dec	
Advance	Early export, hard globe, bolt-tolerant	Sow May; mature mid-Dec	Sow May; mature early to mid-Dec	Sow May to early Jun; mature mid-Dec	✗	
May and Ryan ELK	Industry standard, proven export quality	Sow Jun; mature early Jan	Sow late May to Jun; mature early Jan	Sow Jun to early Jul; mature early Jan	Sow late Jun to Jul; mature early Jan	
Perez	Outstanding uniformity & skin quality, high marketable yield	Sow early to mid-Jul; mature early Jan	Sow late Jun to mid-Jul; mature early Jan	Sow early to mid-Jul; mature early Jan	Sow Jul to Aug; mature mid-Jan	
19045 *	Mid-season maturity between ELK & PLK produces large bulbs, with dark skin colour, excellent pack-out	Sow late Jul to mid-Aug; mature mid-Jan	Sow Jul to early Aug; mature mid-Jan	Sow mid-Jul to early Aug; mature mid-Jan	Sow Jul to mid-Aug; mature mid-late Jan	
Franklin	Hybrid, good uniformity and skin quality	Sow mid-Aug to early Sept; mature late Jan	Sow mid-Aug to early Sept; mature late Jan	Sow mid-Aug to early Sept; mature late Jan	Sow mid-Aug to early Sept; mature late Jan	
May and Ryan PLK	Main season industry export standard, very firm, long storage	Sow mid-Jul to mid-Aug; mature late Jan to early Feb	Sow mid-Jul to mid-Aug; mature late Jan to early Feb	Sow Aug; mature late Jan to early Feb	Sow Aug to early Sept; mature mid-late Feb	
Waikato	Main season hybrid, high yield, export quality	Sow Sept-Oct; mature early to mid-Feb	Sow late Aug to Sept; mature early to mid-Feb	Sow Aug to Sept; mature early to mid-Feb	Sow late Aug to Sept; mature late Feb	

Perez

May and Ryan PLK

Waikato

Listed by date of maturity	SEMINIS RED VARIETIES	Pukekohe	Hawke's Bay	Manawatu	South Island	
XP Red	Early season, flat globe with good colour, mild flavour	Sow late May to mid-June; mature early Jan	Sow mid-May to early Jun; mature early Jan	Sow late May to mid-June; mature early Jan	Over-winter crop sow Mar to Apr; mature Dec. Or sow Jul; mature early Jan	
Red Queen	Early season hybrid, flat globe, good internal and external colour, produces large easy-peel bulbs	Sow early Aug; mature mid-Jan	Sow late Jul to early Aug; mature mid-Jan	Sow early Aug; mature mid-Jan	Sow Jul to mid-Aug; mature mid-late Jan	
Red Keep	Export red, globe shape	Sow Aug; mature mid-Jan	Sow Aug; mature mid-Jan	Sow Aug to early Sept; mature mid-Jan	Sow Aug to mid-Sept; mature mid-late Jan	
Red Company	Late season hybrid red, improved external colour compared to Red Keep	Sow late Aug to mid-Sept; mature late Jan	Sow late Aug to mid-Sept; mature late Jan	Sow late Aug to mid-Sept; mature late Jan	Sow late Aug to mid-Sept; mature late Jan	

Red Keep

Red Company

New rep in Gisborne

Philip Egan has joined the Fruitfed Supplies branch in Gisborne as a field representative.

Philip's horticultural experience is varied with hands-on expertise with citrus, grapes and apple crops as well as broad-acre cropping.

Branch manager Tim Geuze says Philip will support growers in the full range of cropping markets, citrus and grapes. ➡



PRODUCT UPDATES

Protect onion and potato crops with Nautile

The introduction of Nautile® fungicide to NZ for control of late blight in potatoes and downy mildew of onions means New Zealand growers finally have access to one of the most popular disease management tools that European growers have enjoyed for nearly twenty years, says Darren Faire, northern regional manager for Elliott Technologies.

Nautile contains two active ingredients, cymoxanil along with mancozeb, in a water dispersible granule formulation.

"Cymoxanil offers both translaminar and penetrant qualities that provide up to 48 hours curative 'reach back' activity against late blight and downy mildew and up to three days' forward protection," says Darren. "Nautile rapidly penetrates into the leaf. Its post-infection, curative activity gives protection both outside and inside the leaf, even under rainfall or irrigated conditions. Mancozeb's inclusion in the formulation offers 'forward cover' protection."

In terms of chemical resistance management, Nautile is a proven alternative where risk of resistance to metalaxyl-based fungicides exists. After long term use in countries overseas there is still no known resistance to the active ingredient, cymoxanil.

New Zealand field trials confirm what is already known from European users: Nautile provides an extremely cost effective, powerful fungicide

helping ensure optimum crop yields and quality.

For best results, apply Nautile as soon as a disease event occurs, but BEFORE the first symptoms are evident. Nautile has a 14-day withholding period and is available in a 10kg bag. ➡

© Nautile is a registered trademark of Cerexagri, a United Phosphorous Ltd Company
Nautile is registered pursuant to the ACVM Act 1997. No. P7752

FEATURES AND USE GUIDELINES

- ✓ Powerful 24-48 hour curative activity post-infection
- ✓ Proven under high pressure European conditions
- ✓ Two active ingredients
- ✓ Curative and protectant
- ✓ Potato late blight: 2.0-2.3 kg/ha at 7-10 day intervals
- ✓ Onion downy mildew: 2.2-3.3 kg/ha at 7-10 day intervals

A large graphic advertisement for Nautile. The word "Nautile" is written in large, bold, red letters with a registered trademark symbol. To the left of the text is a black marker with a white tip. To the right is a white rocket launching upwards with a bright flame and smoke trail. On the far right is a white 10kg bag of Nautile fungicide. Below the main text, it says "Sink Downy Mildew on Onions and Blight on Potatoes" in bold black letters. Underneath that, it says "Powerful 24 to 48 hour curative activity stops disease development fast". At the bottom left is the website "www.elliott-technologies.co.nz" and at the bottom right is the Elliott logo. Small text at the bottom center reads "Registered pursuant to the ACVM Act 1997, No. P7752. Nautile © is a registered trademark of United Phosphorous Ltd".

Nautile®

Sink Downy Mildew on Onions and Blight on Potatoes

Powerful 24 to 48 hour curative activity stops disease development fast

www.elliott-technologies.co.nz

Registered pursuant to the ACVM Act 1997, No. P7752. Nautile © is a registered trademark of United Phosphorous Ltd

Elliott

Zespri reports strong start for kiwifruit harvest

More than double the volume of Zespri Green and Gold kiwifruit was harvested and packed by the first week in April, compared to the same time last season.

An aggressive early shipping schedule has been in place, with 15% more trays scheduled to be shipped by early May. "We're expecting another large crop this year to be exported within the same 30-week window," said Lain Jager, Zespri's general manager supply chain.

Dry weather conditions have helped bring this season's harvest forward.

However a labour shortage was declared in the Bay of Plenty, where 80% of Zespri's New Zealand kiwifruit is grown. ➡



The Sampaquita 1 being loaded with kiwifruit at the Port of Tauranga, bound for Japan, in early April.



The Horticultural ICE Expo in Hawke's Bay on 22 July will see an increase in the number of associated events and attractions.

"We are thrilled with the response from the horticultural sectors," said Hawke's Bay Fruitgrowers' Association chairman Leon Stallard. "Pipfruit New Zealand and Summerfruit New Zealand have aligned their conferences and technical days so that participants can visit ICE and this year the Hawke's Bay Winegrowers' Association will be present at the event. We feel this support speaks volumes about the industry's need for such an event."

The Ministry of Research Science and Technology's Future Food Roadshow and Agrecovery's world's first agrichemical container recycling truck will be on display. The venue is again the ENZA Coolstores in Whakatu. ➡

TECH-KNOW TIPS

AVOCADOS



Reminders for May:

- ✓ It is important to monitor for **greenhouse thrips** and **leaf roller** as they continue to be an issue through April and into May. Greenhouse thrips populations in particular tend to increase rapidly in autumn, damaging fruit if they remain uncontrolled. Calypso is the product of choice for greenhouse thrips control.
- ✓ Continue to maintain a **fungicide cover** with copper products such as Kocide 2000LF or the new Kocide Opti. Industry best practice still recommends 8 fungicide applications per year for optimum fruit quality.
- ✓ April/May is the correct timing for **leaf and soil sampling**. The resulting analysis provides an accurate indication of plant and soil nutrient status and is necessary to design the coming year's fertiliser programme. Please contact your local Fruitfed Supplies branch for details.

Avocados are susceptible to **frost** – ensure adequate frost protection is in place, particularly on young trees and/or higher altitude or colder areas. Frost protection methods include options such as overhead watering, wind machine, frost covers on young trees (see photo) or application of

low-biuret urea. For details on the best frost protection system to suit your situation, please contact your local Fruitfed Supplies representative.



Young avocado tree well insulated against frost

BRASSICAS



Reminders for May:

- ✓ **Bacterial head rot** may occur during warm wet weather or warm days followed by cool nights. Excessive nitrogen or organic manure applications should be avoided as this leads to soft foliage which is more susceptible to infection.
- ✓ **Cabbage grey aphids** may still



be infesting crops. Monitor populations and apply Chess or Pirimor to selectively control aphid infestations.

- ✓ **Slugs and snails** move into fields during damp weather and are worse where weeds are abundant. Banded applications of slug baits where signs or damage is seen should prevent further progress.
- ✓ **Ringspot** will start infecting crops during autumn if the foliage is wet for long periods during daylight. Apply protectant fungicides or a systemic fungicide if conditions favour infection (apply a maximum of 3-4 systemic fungicides per crop).

CITRUS



Reminders for May:

- ✓ Monitor for **scale crawler** release as this may continue through May. The young stages are most easily controlled, whereas heavy adult populations are extremely difficult to remedy. For pest control options, please talk with your Fruitfed Supplies representative.
- ✓ **Brown rot** may infect healthy fruit pre-harvest, especially if conditions are wet. Control with Kocide 2000 LF, Blue Shield or Dithane Rainshield.
- ✓ Continue monitoring for **greenhouse thrips** to ensure any infestations are detected as they may continue to be an issue through May, on late harvested varieties. Contact your Fruitfed Supplies representative for control options.
- ✓ Consider application of **Perk Supa** in autumn to strengthen the plant and improve disease resistance. For further information, please contact your Fruitfed Supplies representative.



Brown soft scale

GRAPES



Reminders for May:

- ✓ **Mulching** helps return organic matter to the soil. It also reduces potential disease carry-over by destroying the over-wintering structures of some grape diseases.
- ✓ The application of a product that promotes the breakdown organic matter on the soil surface may help improve soil structure and enhance the release of nutrients into the soil to be used by the vines.

Winter is here and many growers will be busy organising **pruning**, which is essential for regulating both the quantity and quality of grapes produced on a vine. However, by making cuts into living plant tissue the vine is temporarily rendered vulnerable to a range of wood-infecting plant pathogens. These are opportunistic pathogens that usually infect vines via pruning wounds during, or shortly after, rainfall events. Therefore pruning during rain or when adverse weather is imminent is not recommended. If your vines display symptoms of one or more of these diseases then infected parts of the vine should be removed and burnt, particularly all pruning wood older than one year. It's also important to apply a suitable wound dressing soon after pruning cuts have been made, as vines are most susceptible to infection at this time. Your local Fruitfed representative is available to discuss all aspects of the management of wood invading diseases during pruning.

KIWIFRUIT



Reminders for May:

- ✓ Continue to monitor for **leaf roller** up to harvest, as late season infestations (particularly of the black lyre leaf roller) may cause extensive damage in some blocks. Control with Delfin WG as required (2 day pre-harvest interval).
- ✓ Assess crops prior to harvest to determine whether **stain removal** is required. Fruit staining typically becomes more apparent as we move to later blocks due for harvest in May and June. Research by Fruitfed Supplies Technical team combined with growers' field experience over the past ten+ years has demonstrated the effectiveness of Kiwilustre (a lactic acid formulation) for the removal of kiwifruit stains. Kiwilustre is very effective when used correctly and treated fruit do not re-stain in storage (an issue with older formulations containing citric acid). The Kiwilustre formulation also gives increased protection against re-staining in the field if rain occurs after application but before fruit are picked. For further information on fruit staining causes, remedies and best application practices, please contact your local Fruitfed Supplies branch or representative.

A key period where **nitrogen** is required by the vine is early season vegetative growth (canopy development) and flowering. However, due to cool soil temperatures and poor root function at this time, nitrogen is largely sourced from stores in the woody parts of the vine. Application of low-biuret urea immediately after harvest is standard practice and gives an early opportunity to supply valuable nitrogen to the upper part of the plant, which is then stored for use the following season. For information how post-harvest nitrogen should best be applied in your situation, please contact your Fruitfed Supplies representative.

Greenhouse thrips damage on Kiwifruit leaf.



LETTUCE



Lettuce drop infects through the lower leaves of lettuces through direct infection of leaves touching the soil (*Sclerotinia minor*) or through spores being released from apothecia on the soil, infecting leaves they land on (*S. sclerotiorum*). Use crop rotation to lower soil inoculum levels. A fungicide application, e.g. Prolific, at the 4-6 true leaf stage can reduce the incidence of *S. minor*, while fungicide applications for control of *S. sclerotiorum* need to be focussed around pre-hearting to protect the upper leaves from infection. Infested crop residues should be deep ploughed after harvest.

ONIONS



As part of a grower's preparation to start sowing onion seed for next season, **soil samples** should be taken from fields that are going to be used, for nutrient analysis. This information should then be used to determine fertiliser requirements for the crop.

PIPFRUIT



Reminders for May:

- ✓ If **European canker** is established in your orchard, the correctly timed

applications of a suitable protectant fungicide e.g. Euparen Multi, during the leaf-fall period is vital.

- ✓ If **woolly apple aphid** was a problem this season, monitor trees for the presence of the parasite *Aphelinus mali*. If detected do **not** spray as they will continue to parasitize WAA and build up their population base for next season. In those blocks where **no** *A. mali* are found, the application of a suitable insecticide, e.g. Diazinon, will assist in preventing further bud damage. After insecticide application, identify shoots where *A. mali* are present and redistribute throughout your sprayed blocks to assist re-establishment.
- ✓ If your **boron** levels are low, a post-harvest pre-leaf fall boron, e.g. Bortrac, application is the most effective timing to ensure adequate levels are present in spring.

Leaf symptoms (reddish to purple in the mid-rib area) in the late summer are often the first indication of **phytophthora** being present in your orchard. From a cultural perspective, soil water management is vital to avoid prolonged and periodic soil saturation or standing water around the base of the trees. The application of a suitable systemic fungicide, i.e. Aliette or Foli-R-Phos, is recommended at this time.

The application of a post-harvest pre-leaf fall application of **urea and/or Digester D** is the most effective first step in the reduction of **black spot inoculum** in your orchard. For rates and optimum timing, contact your Fruitfed Supplies representative.

Autumn is an important period for controlling problem **perennial weeds** and correct herbicide application should provide a relatively weed-free strip until spring. Contract your Fruitfed Supplies representative to discuss the most effective weed control programme for your orchard.

Continue to monitoring blocks for **European canker**. If detected, apply a protectant fungicide prior to any predicted rain events after the onset of leaf fall. Trees of all ages may be attacked. Infection most commonly occurs through leaf scars and the major infection period is in autumn during leaf fall. Research conducted in California indicated that some leaf scars might remain susceptible to infection in excess of 10-28 days after leaf fall.

The protectant fungicide Euparen Multi, from the sulphamide group, has performed very well in European and Fruitfed's research trials. Timing is critical. The first application of Euparen Multi should be made at the onset of leaf fall prior to any wet events. Repeat applications if further rainfall is predicted during leaf fall. For further advice on the correct product, timing and rates, discuss with your Fruitfed Supplies representative.



European canker *Neonectria galligena* on apple branch

POTATOES



Reminders for May:

- ✓ **Harvested tubers** should be allowed to cure to allow wounds to heal and prevent infection. Healing proceeds most rapidly at 21°C, but infection by pathogens is also rapid at temperatures above 15°C. American literature recommends holding healthy tubers at 14-16°C, and diseased tubers at 10°C for healing. Relative humidity should be kept above 95% during the healing period. Spores of pathogens that cause storage rots can also drift around potato stores in the dust. Thorough shed hygiene will help reduce the chances of wounds being infected.

- ✓ The **tomato potato psyllid (TPP)** has become a considerable problem in many potato (and tomato) crops in the North Island towards the end of this season. Substantial effort is going into researching control options for this pest. A key consideration for growers is how to minimise populations of the pest during winter to reduce pressure next season. Growers should be looking at controlling host weeds in the headlands, along fence-lines and around waste areas and any self-sets present too. TPP may sit on these plants over-winter, waiting for warm weather to return.

STONEFRUIT



Reminders for May:

- ✓ The application of **coppers** during the post harvest (pre leaf fall) and leaf fall to complete leaf fall periods is vital to protect leaf scars from infection.
- ✓ Autumn is an important period for controlling problem perennial weeds. Correct application should provide a relatively weed-free strip through until spring. Contract your Fruitfed Supplies representative to discuss the most effective weed control programme for your orchard.

The autumn leaf fall period is critical for the control of **bacterial disease** in stonefruit. Leaf scars remaining after leaf abscission provide ideal entry sites for blast and bacterial spot disease, when drops of water contaminated with bacteria are sucked into exposed vessels.



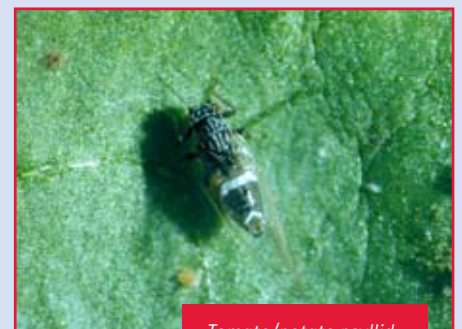
Stonefruit blast *Pseudomonas syringae*

Pruning wounds and other injuries can also serve as penetration sites. The key to satisfactory control of blast and bacterial spot is to keep bacterial populations low on plants at all times and to prevent opportunities for infections to establish. No resting stages are known in the life cycle of blast, but the sites of bacterial activity alternate between branch cankers in winter and leaf spots in summer. The applications of copper, e.g. Fruitfed Copper Oxchloride or Kocide, during the post-harvest (pre-leaf fall) and leaf fall periods are vital to protect leaf scars from infection.

TOMATOES



The **tomato potato psyllid (TPP)** has become a considerable problem in many tomato (and potato) crops on the North Island east coast, towards the end of this season. Substantial effort is going into researching control options for this



Tomato/potato psyllid adult.
(Photo: Shaun Bennett, IDC Tamaki).

pest. A key consideration for growers is how to minimise populations of the pest during winter to reduce pest pressure next season. Growers should be looking at controlling host weeds in the headlands, along fence-lines and around waste areas. TPP may sit on these plants over-winter, waiting for warm weather to return.

Record season ahead for Orchard-Rite

A record season is on the cards as demand for the Orchard-Rite wind machine continues to increase and plans are developed for installations throughout the grape, pipfruit and cropping industries in coming months.

On a recent visit by the US-based Orchard-Rite director Rod Robert and international service manager Scott Howard, client interest in the wind machines was very high.

"The 3000 series model has really proved itself over the last season and those that have experienced the power of the machine have been impressed," says Fruitfed Supplies category manager Rob Lamb. "Last season's results and word of mouth have played a large part in the demand for the machine this season."

"It's like what we've been saying about Orchard-Rite wind machines for all these years is being accepted by our clients now," adds Rob. "The performance and reliability of the Orchard-Rite fibreglass blades is far ahead of anything else available and with the advanced engine options, factory support and a constant focus on quality and technology improvements we have a package we are extremely proud of."

The annual visits to New Zealand by the experienced Orchard-Rite team contribute to an already technically-strong product service situation.

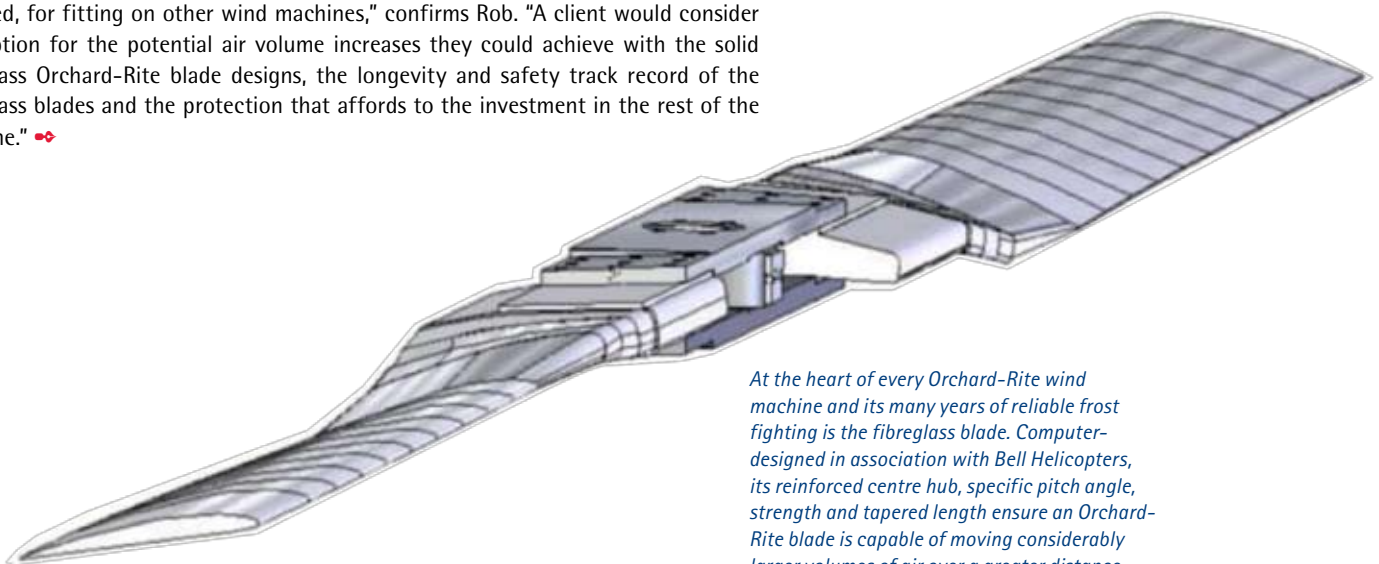
"Rod has been in the wind machine industry for over 30 years – we are fortunate to have access to Rod's vast experience and being able to share that with our clients. He's visited New Zealand many times and is familiar with our landscapes and the challenges of frost fighting."

Rob says he is also seeing an increased uptake of Orchard-Rite blades being retro-fitted to other brands of wind machines.

"We're able to offer suitable fibreglass blades, as well as Orchard-Rite gearboxes if required, for fitting on other wind machines," confirms Rob. "A client would consider this option for the potential air volume increases they could achieve with the solid fibreglass Orchard-Rite blade designs, the longevity and safety track record of the fibreglass blades and the protection that affords to the investment in the rest of the machine." ⇨



In Morton Estate's Awatere vineyard identifying sites for new Orchard-Rite wind machines are (L-R) Richard Rutherford, Fruitfed Supplies Blenheim branch manager; Paul McIntyre, Morton Estate vineyard manager; Rod Robert and Scott Howard, Orchard-Rite Pty Ltd.



At the heart of every Orchard-Rite wind machine and its many years of reliable frost fighting is the fibreglass blade. Computer-designed in association with Bell Helicopters, its reinforced centre hub, specific pitch angle, strength and tapered length ensure an Orchard-Rite blade is capable of moving considerably larger volumes of air over a greater distance.

Fruitfed Supplies

Facts is a monthly publication of Fruitfed Supplies. Feedback to the editor is welcome. Please contact Kate Gordon, Relish Communications, c/o PO Box 2116, Auckland, email: kate@relishcomm.co.nz or mobile 021 587 227. Subscription details and address updates, please phone Fruitfed Supplies national office on 09 448 0510.

The information contained in this publication is of a general nature and should not be relied upon as a substitute for professional advice in specific cases. All content of this publication is subject to copyright. Any further use or reproduction of images or content is forbidden without prior permission of Fruitfed Supplies head office.